



SQL Server 2008 Express R2 (32 bit) Installation Guide

TABLE OF CONTENTS

1. Introduction	1
1.1 Purpose.....	1
2. Minimum System Requirements	1
2.1 Supported Operating Systems.....	1
2.2 Hardware Requirements.....	1
3. Download	1
3.1 Download SQL Server 2008 Express R2 (32 bit).....	1
3.2 Installation.....	2
3.2.1 Install SQL Server 2008 Express R2 (32 bit)	2

1. Introduction

1.1 Purpose

This document contains instructions for installing SQL Server 2008 Express R2 (32 bit). This is a software requirement for PARTS (Paragon Automated Resource Typing System) and should be installed prior to setup.

2. Minimum System Requirements

2.1 Supported Operating Systems

- Windows XP SP3
- Windows Server 2003 SP2
- Windows Vista SP1
- Windows Server 2008
- Windows Server 2008 R2
- Windows 7

2.2 Hardware Requirements

- Minimum disk space (2 GB)

3. Download

3.1 Download SQL Server 2008 Express R2 (32 bit)

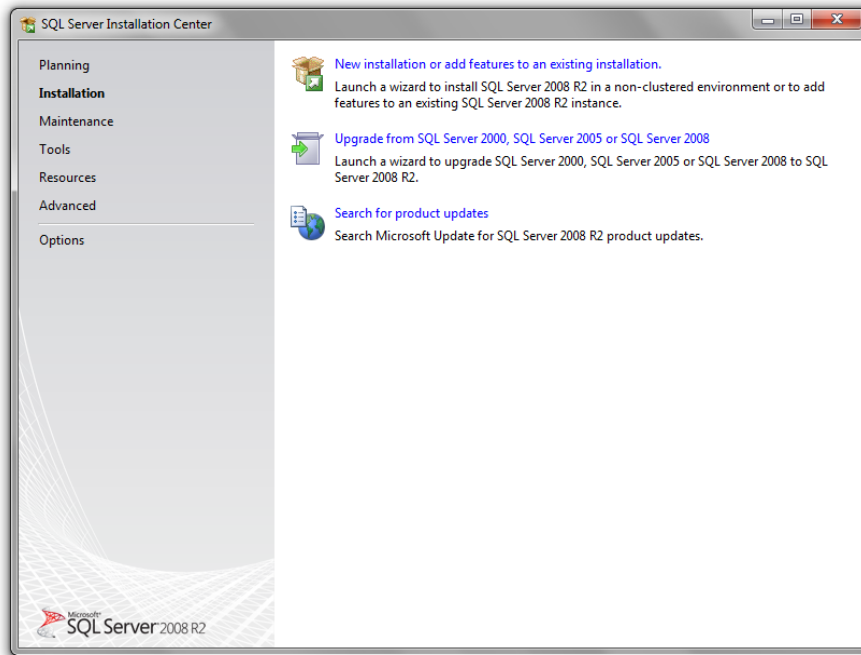
Download the latest [SQL Server 2008 Express R2 \(32 bit\)](https://www.microsoft.com/betaexperience/pd/SQLEXPDBMT32/enus/) installation executable (SQLEXPRT_x86_ENU.exe) from Microsoft to your local disk drive.



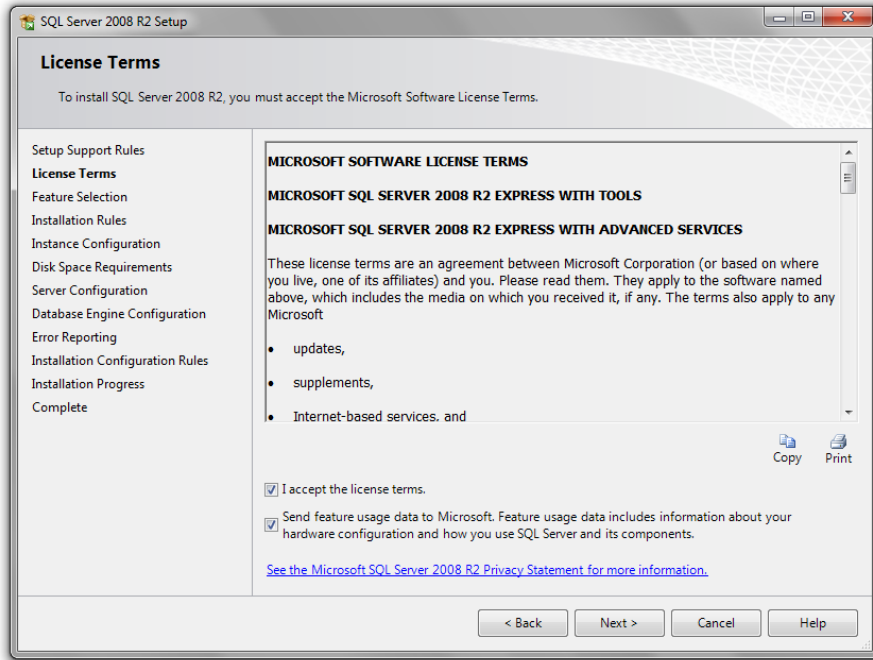
3.2 Installation

3.2.1 Install SQL Server 2008 Express R2 (32 bit)

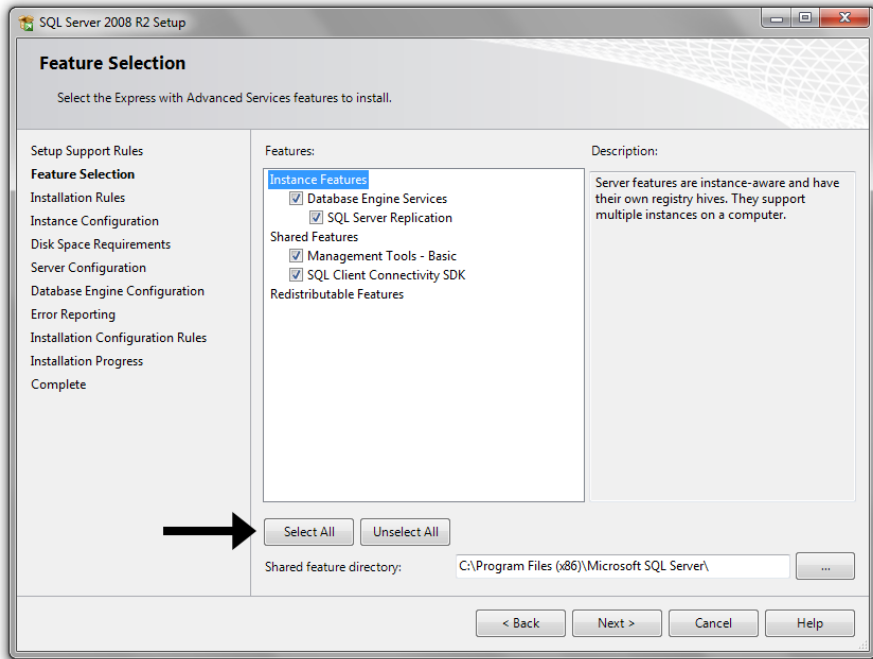
1. Locate the downloaded SQL Server 2008 Express R2 installation executable **SQLEXPRT_x86_ENU.exe** and double click to run.
2. Click the **New installation or add features to an existing installation** option and follow the instructions provided.



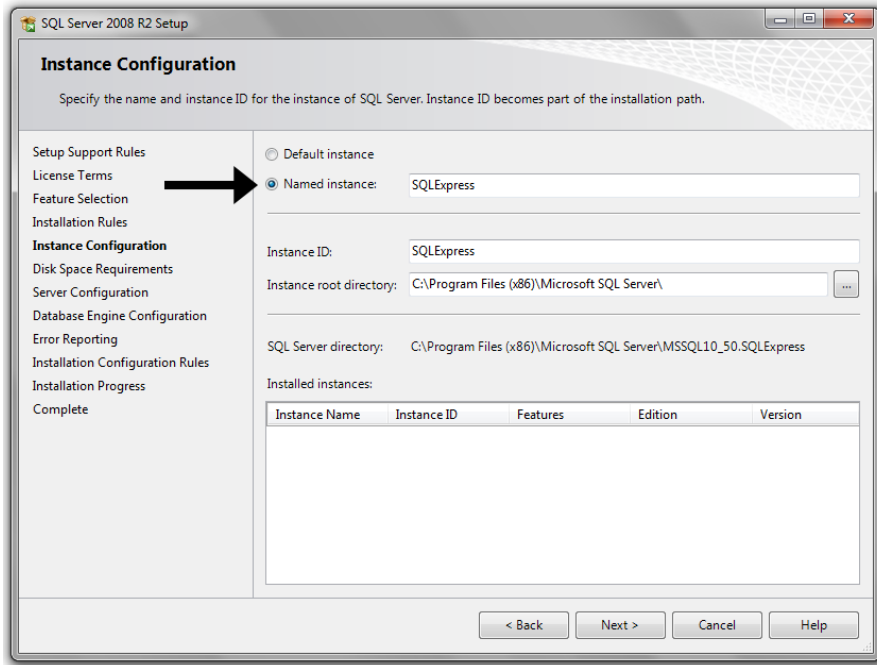
3. (License Terms) Accept the license terms.



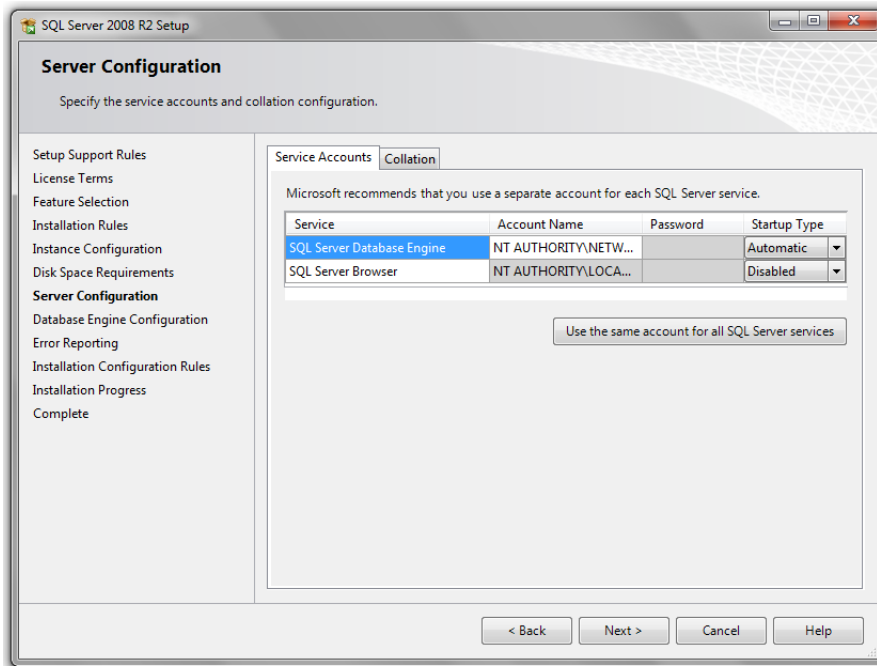
4. (Feature Selection) Select all of the available features.



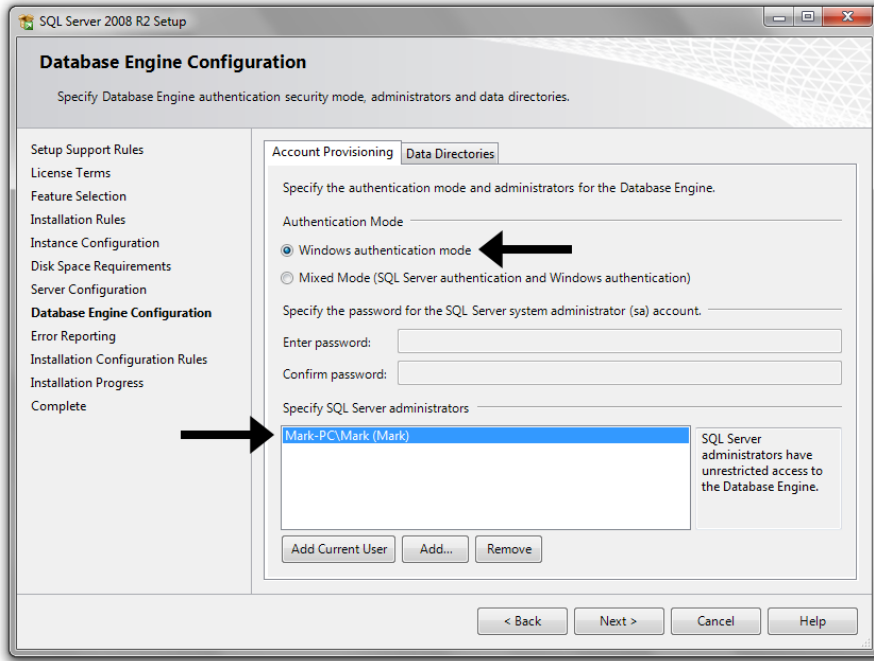
5. (Instance Configuration) Select the **Named instance** option.



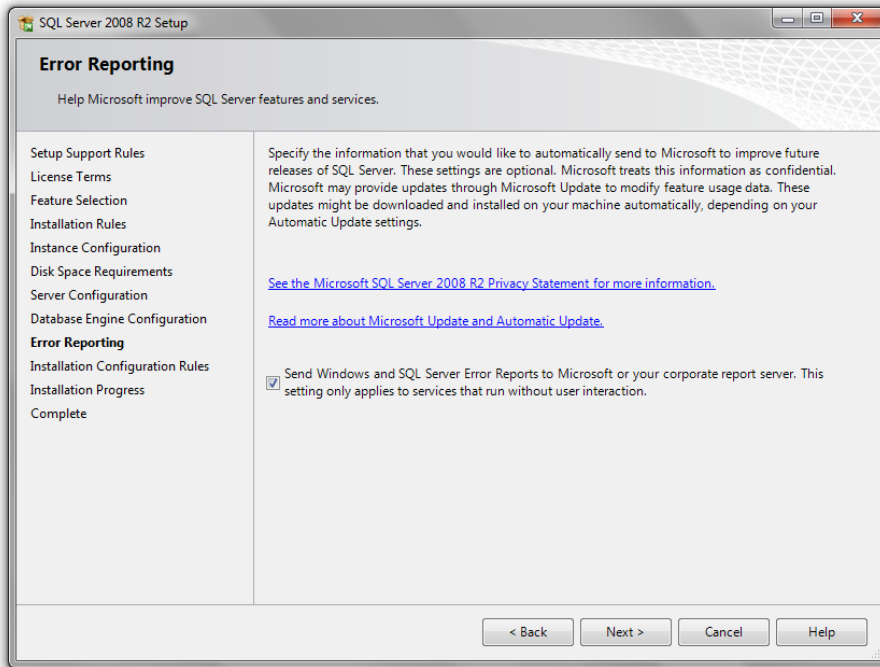
6. (Server Configuration) Accept the default Windows service accounts **NT AUTHORITY** name.



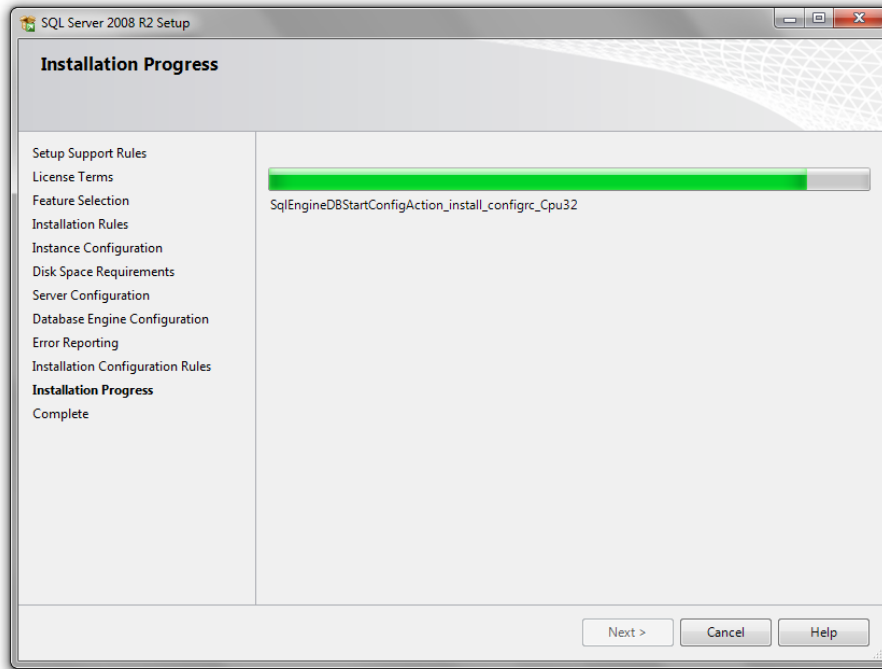
7. (Database Engine Configuration) Select the **Windows authentication mode** option and use your default **Windows Domain\User Name** as SQL Server administrator.



8. (Error Reporting) This optional feature enables error reporting.



9. (Installation Progress) Follow the prompts and let the installation process run.



10. (Complete) The installation has completed successfully. Close the installation program.

